

# Getting ready for year 7 Science

Your 3 Science subjects are:

Biology

Chemistry

Physics



# Subject 1 - Biology

You are going to have a look at three different biology topics:

Plant and animal cells

Specialised cells

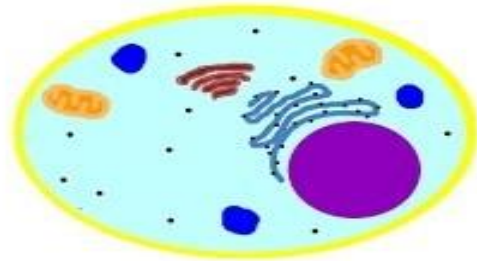
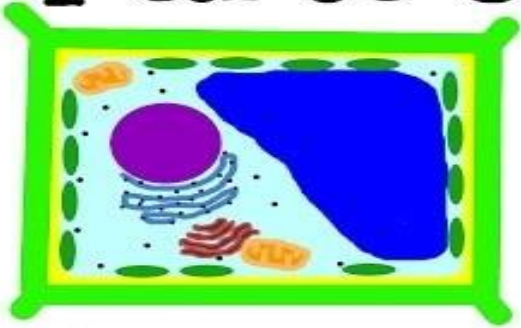
Defence against diseases

# Plant and animal cells

Watch

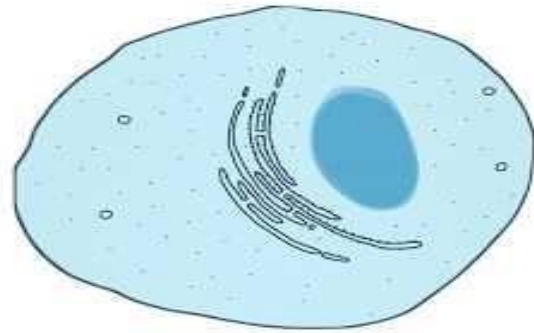
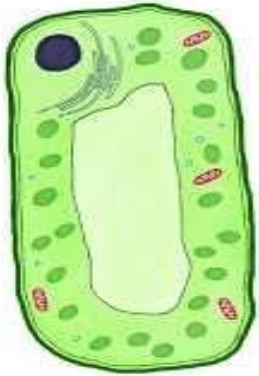
Quiz

## Parts of a Cell



# Specialised Cells

Watch



Quiz



# Defence against diseases

Watch



Quiz



# Subject 2 - Chemistry

You are going to have a look at three different chemistry topics:

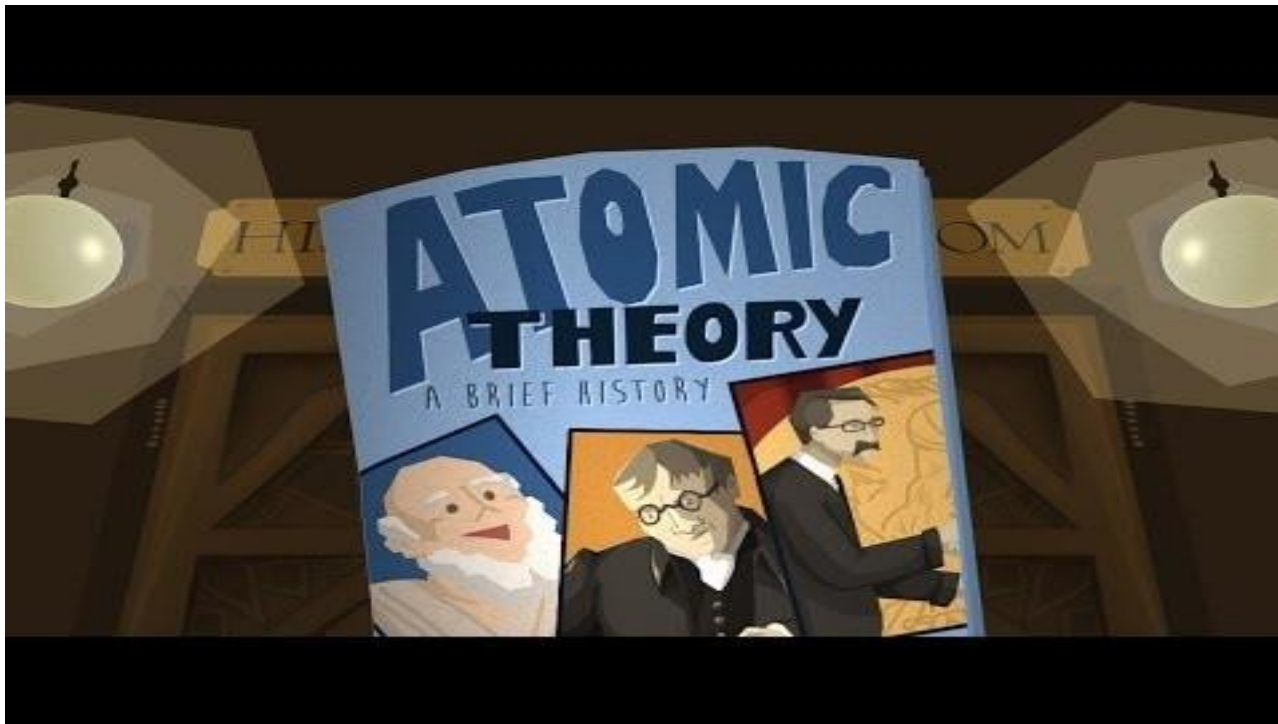
Discovery of the atom

The Periodic table

Elements, Mixtures and Compounds

# Discovery of the atom

Watch



Quiz



# The Periodic table

Watch

Quiz

THE UPDATED  
**P**ERIODIC  
**Ta**BLE  
**S**ONG







# Subject 3 - Physics

You are going to have a look at three different physics topics:

Energy stores

Energy efficiency

Energy efficiency in the home

# Energy Stores

Watch

KEY STAGE 3



Energy stores and transfers

A video thumbnail for a Key Stage 3 lesson. The top part has a blue banner with 'KEY STAGE 3' and three icons: a potted plant, a beaker with a flame, and a planet. Below this is a cartoon monkey wearing headphones and reading a book. The text 'Energy stores and transfers' is written in blue. The bottom part of the thumbnail is black.

Quiz



# Energy Efficiency

Watch

11,000 J  
Electrical energy (Input)

9,900 J  
Heat energy (Useful output)

Wasted energy

How **efficient** is the kettle?

The diagram illustrates the energy flow in a kettle. It shows a red kettle with water inside. An arrow labeled '11,000 J Electrical energy (Input)' points to the kettle. Two arrows point away from the kettle: one labeled '9,900 J Heat energy (Useful output)' and another labeled 'Wasted energy'. Below the kettle, the text asks 'How efficient is the kettle?'.

Quiz



# Energy efficiency in the home

Watch



Quiz

